



## CONSTRUCTION UPDATE

**April 2017**

Construction continues at the corner of South Park and Sackville on Southwest's mixed-use development, which will include **PAVILION** condominiums, the **YMCA** Centre of Community and **CURVE** rental residence.

Recent activity has seen the installation of two cranes on the site for the construction of the two building development. Over the next few months formwork will continue to take place on foundation work. Most recently, concrete was poured for the 3rd level parkade for both buildings.

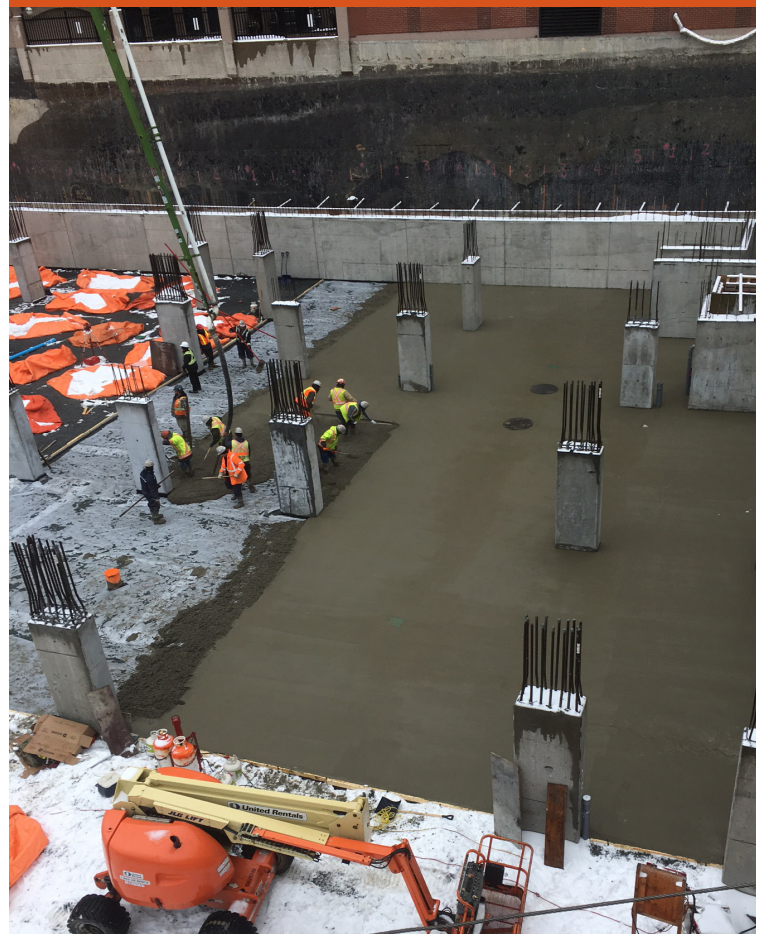
The Southwest construction team plan to be at street grade level this summer, followed by the next major phase of constructing the tower for **CURVE**, a 205 rental building.

The perimeter of the site has been wrapped with banners containing vital information about the project, contact information, as well as safety and navigational information.

Southwest Properties values the importance of being a good community neighbour and we recognize the need to provide attractive, clear and concise project information on our development sites. We continue to distribute community updates to surrounding businesses and local residents, and as always ensure site activities adhere to HRM development by-laws.

To receive a digital community update, contact Southwest Properties or register at [urbanhalifax@southwest.ca](mailto:urbanhalifax@southwest.ca)

## SOUTH PARK PROJECT



**Concrete pour of level 3 of parkade - March 2017**





# SOUTH PARK PROJECT UPDATE



In late December 2016 it was announced that **CURVE** will be the name for the rental building that will sit to the south of **PAVILION** and the new **YMCA Centre of Community**.

**CURVE** will have a sophisticated, urban flare to its 205 luxury rentals overlooking the Public Gardens and will house over 10,000 square feet of street level retail. **CURVE** will be an exciting building, welcoming close to 300 residents. With the addition of almost 200 people who will make **PAVILION** their home, the **SOUTH PARK** project will create a whole new vibrancy for the street.

Approximately 500 people will be living at **SOUTH PARK** and thousands of YMCA members will be enjoying the new 70,000 square foot facility and exciting retail at street level.

To register for **CURVE** updates - go to [southwest.ca/curve](http://southwest.ca/curve)



## PROJECT STATS

North Tower - 13 Storeys - PAVILION- 83 condominiums

South Tower - 16 Storeys - CURVE rental building - 205 Units


70,000 sq. ft. YMCA in North Tower

20,000 Square Feet combined Retail

Three levels interior parking

Completion Date - Late 2018 \*



 **Southwest**  
Live. Shop. Work. Play.™