



CUNARD DEVELOPMENT

Tuesday, April 12th, 2022

Southwest Properties is the developer for the mixed-use residential project being constructed at 1325 Lower Water Street on the Cunard lot.

We will be conducting a concrete pour on site **Thursday, April 14th with a start time of 6:30 am and ending mid-afternoon.** Traffic control personnel will be onsite during this time.

A sidewalk closure on the east side of Lower Water Street (in front of Cunard lot) will be required to safely accommodate construction vehicles. The partial closure will have bike and pedestrian traffic diverted to the opposite side of the street in front of Waterfront Place condominium.

The Southwest parking lot on the north side of the Cunard site is closed to all delivery trucks, staff vehicles and pedestrians.

There are no planned disruptions to local services or vehicular traffic during this scheduled, Halifax City approved work.

All site work is in adherence to HRM's working hours and noise by-laws.

We appreciate your patience and co-operation as we undergo construction, and we look forward to introducing an exciting new residential and retail address to Halifax.

Any questions pertaining to site activity to Southwest Properties at urbanhalifax@southwest.ca



Date: 10/13/2021 **Author:** John Smith (johns@easterntraffic.ca) **Project:** 1325 Lower Water St
Page 3: Tactical Bikeway Closure **Job #:** 2103305 **Super:** Matt Nickerson

Comments:

- This plan illustrates a bicycle lane closure on Lower Water St. to facilitate cast in place catch basin.
- To be used in conjunction with Pages 1 and 2.

This plan illustrates a bicycle lane closure on Windsor St. to facilitate milling and paving operations.
- To be used in conjunction with Page 2.
- A lane width of 3 meters will be maintained at all times.



Google

- Legend**
- Barrel
 - Cone
 - Work Area
 - Sign Base
 - Open To Pedestrians
 - Closed to Pedestrians



Date: 10/13/2021 Author: John Smith (johns@easternttraffic.ca) Project: 1325 Lower Water St
 Page 1: Partial Lane Closure Job #: 2103305 Super: Matt Nickerson

Comments:

- This plan illustrates a Partial Lane Closure on Lower Water St. to facilitate a cast in place catch basin install between NSPI and Bishop Landing.
- Using Application Guide C-22 from the NSTCM (2018.01.25)



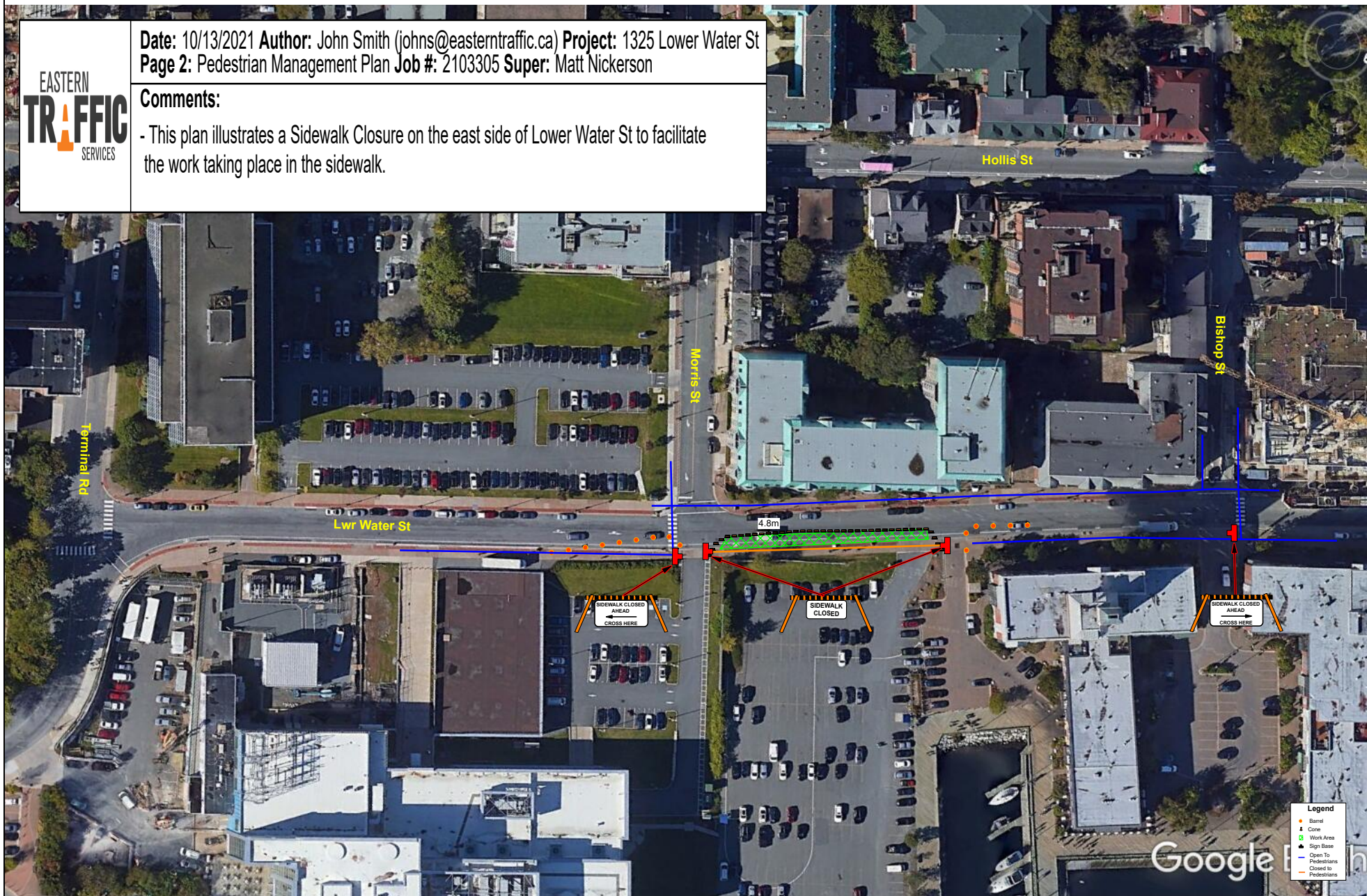
Legend		W	SO
●	Barrel	A	50
▲	Cone	L	30
■	Work Area	B	5
■	Sign Base	D	5
■	Temporary Condition Sign	W	Speed Zone
■	Jersey Barrier	A	Sign Spacing
		L	Sign Length
		B	Buffer Area Length
		D	Conc. Drum Spacing



Date: 10/13/2021 **Author:** John Smith (johns@easterntraffic.ca) **Project:** 1325 Lower Water St
Page 2: Pedestrian Management Plan **Job #:** 2103305 **Super:** Matt Nickerson

Comments:

- This plan illustrates a Sidewalk Closure on the east side of Lower Water St to facilitate the work taking place in the sidewalk.





Date: 10/13/2021 **Author:** John Smith (johns@easterntraffic.ca) **Project:** 1325 Lower Water St
Page 3: Tactical Bikeway Closure **Job #:** 2103305 **Super:** Matt Nickerson

Comments:

- This plan illustrates a bicycle lane closure on Lower Water St. to facilitate cast in place catch basin.
- To be used in conjunction with Pages 1 and 2.

This plan illustrates a bicycle lane closure on Windsor St. to facilitate milling and paving operations.
- To be used in conjunction with Page 2.
- A lane width of 3 meters will be maintained at all times.



Google

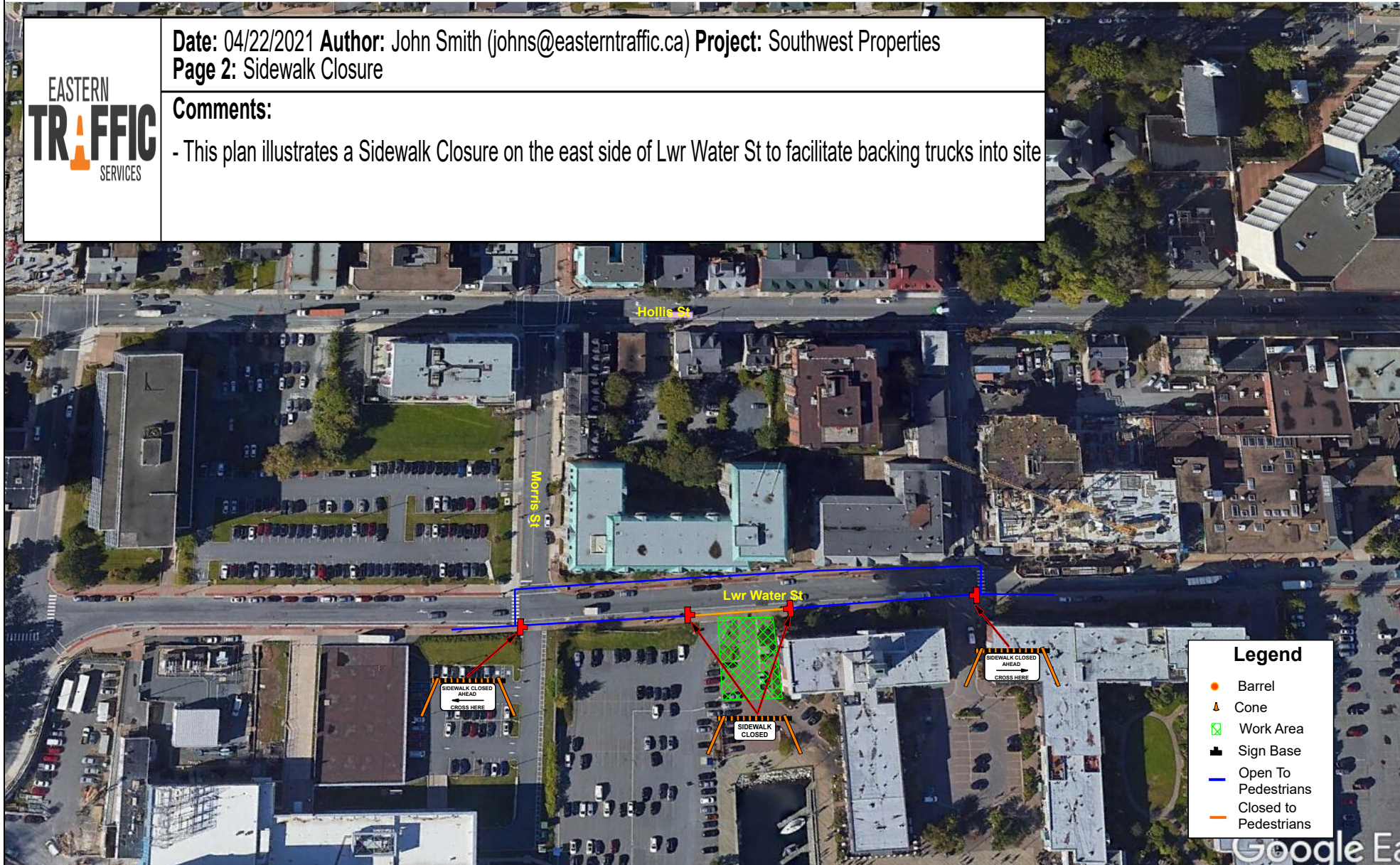
- Legend**
- Barrel
 - Cone
 - Work Area
 - Sign Base
 - Open To Pedestrians
 - Closed to Pedestrians



Date: 04/22/2021 Author: John Smith (johns@easterntraffic.ca) Project: Southwest Properties
Page 2: Sidewalk Closure

Comments:

- This plan illustrates a Sidewalk Closure on the east side of Lwr Water St to facilitate backing trucks into site



Legend

- Barrel
- Cone
- Work Area
- Sign Base
- Open To Pedestrians
- Closed to Pedestrians