



CUNARD DEVELOPMENT

NOTICE: Friday, May 20th, 2022

Southwest Properties is the developer for the mixed-use residential project being constructed at 1325 Lower Water Street on the Cunard lot.

Site activity will have a sidewalk closure on the east side of Lower Water Street (in front of Cunard lot) on Wednesday, May 25th. This partial closure is required to safely accommodate construction personnel and vehicles.

During this time bike and pedestrian traffic will be diverted to the opposite side of the street in front of Waterfront Place condominium. Traffic control personnel will be onsite during this time.

The Southwest staff parking lot on the north side of the Cunard site will have limited access on Tuesday and Wednesday of next week. All delivery trucks, vehicles and pedestrians will be redirected to Bishop's Landing courtyard.

There are no planned disruptions to local services or vehicular traffic during this scheduled, Halifax City approved work.

All site work is in adherence to HRM's working hours and noise by-laws.

We appreciate your patience and co-operation as we undergo construction, and we look forward to introducing an exciting new residential and retail address to Halifax.

Any questions pertaining to site activity to Southwest Properties at urbanhalifax@southwest.ca



Date: 10/13/2021 **Author:** John Smith (johns@easterntraffic.ca) **Project:** 1325 Lower Water St
Page 3: Tactical Bikeway Closure **Job #:** 2103305 **Super:** Matt Nickerson

Comments:

- This plan illustrates a bicycle lane closure on Lower Water St. to facilitate cast in place catch basin.
- To be used in conjunction with Pages 1 and 2.

This plan illustrates a bicycle lane closure on Windsor St. to facilitate milling and paving operations.
- To be used in conjunction with Page 2.
- A lane width of 3 meters will be maintained at all times.



Google Earth



Date: 10/13/2021 Author: John Smith (johns@easterntraffic.ca) Project: 1325 Lower Water St
Page 1: Partial Lane Closure Job #: 2103305 Super: Matt Nickerson

Comments:

- This plan illustrates a Partial Lane Closure on Lower Water St. to facilitate a cast in place catch basin install between NSPI and Bishop Landing.
- Using Application Guide C-22 from the NSTCM (2018.01.25)



Legend		W	SO
	Barrel	A	50
	Cone	L	30
	Work Area	B	5
	Sign Base	D	5
	Temporary Condition Sign	V	Speed Zone
	F.L.U.	A	Sign Spacing
	Jersey Barrier	L	Signal Length
		B	Buffer Area Length
		D	Conc. Drum Spacing



Date: 10/13/2021 Author: John Smith (johns@easterntraffic.ca) Project: 1325 Lower Water St
Page 2: Pedestrian Management Plan Job #: 2103305 Super: Matt Nickerson

Comments:

- This plan illustrates a Sidewalk Closure on the east side of Lower Water St to facilitate the work taking place in the sidewalk.





Date: 10/13/2021 **Author:** John Smith (johns@easterntraffic.ca) **Project:** 1325 Lower Water St
Page 3: Tactical Bikeway Closure **Job #:** 2103305 **Super:** Matt Nickerson

Comments:

- This plan illustrates a bicycle lane closure on Lower Water St. to facilitate cast in place catch basin.
- To be used in conjunction with Pages 1 and 2.

This plan illustrates a bicycle lane closure on Windsor St. to facilitate milling and paving operations.
- To be used in conjunction with Page 2.
- A lane width of 3 meters will be maintained at all times.



Google

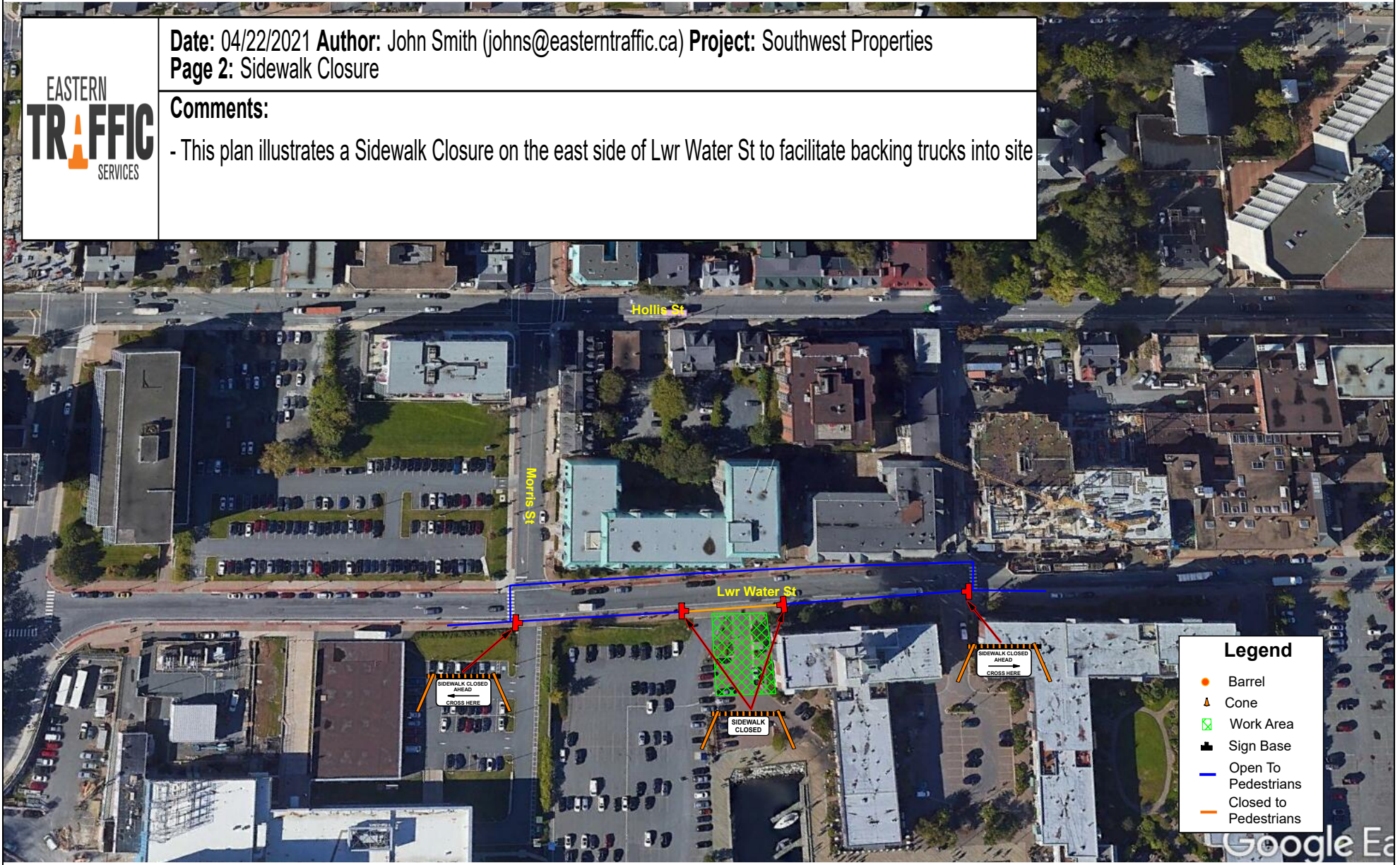
- Legend**
- Barrel
 - Cone
 - Work Area
 - Sign Base
 - Open To Pedestrians
 - Closed to Pedestrians



Date: 04/22/2021 Author: John Smith (johns@easterntraffic.ca) Project: Southwest Properties
Page 2: Sidewalk Closure

Comments:

- This plan illustrates a Sidewalk Closure on the east side of Lwr Water St to facilitate backing trucks into site



Legend

- Barrel
- ▲ Cone
- ▨ Work Area
- Sign Base
- Open To Pedestrians
- Closed to Pedestrians