

CUNARD DEVELOPMENT NOTICE

Friday, June 3rd, 2022

Southwest Properties is the developer for the mixed-use residential project being constructed at 1325 Lower Water Street on the Cunard lot.

Site activity will have a sidewalk closure on the east side of Lower Water Street (in front of Cunard lot) on Monday, June 6th, Tuesday, June 7th and Friday, June 10th. The partial sidewalk closure is required to safely accommodate construction activities.

During this time pedestrian traffic will be diverted to the opposite side of the street in front of Waterfront Place condominium and bicycles will merge into traffic flow. Traffic control personnel will be onsite during this time.

The Southwest staff parking lot on the north side of the Cunard site will have limited access and all delivery trucks, vehicles and pedestrians will be redirected to Bishop's Landing courtyard.

There are no planned disruptions to local services or vehicular traffic during this scheduled, Halifax City approved work.

All site work is in adherence to HRM's working hours and noise by-laws.

We appreciate your patience and co-operation as we undergo construction, and we look forward to introducing an exciting new residential and retail address to Halifax.

Any questions pertaining to site activity to Southwest Properties at urbanhalifax@southwest.ca

All community updates can be found on our company website and notices on social channels > <https://southwest.ca/developments/cunard/>



Date: 10/13/2021 **Author:** John Smith (johns@easterntraffic.ca) **Project:** 1325 Lower Water St
Page 3: Tactical Bikeway Closure **Job #:** 2103305 **Super:** Matt Nickerson

Comments:

- This plan illustrates a bicycle lane closure on Lower Water St. to facilitate cast in place catch basin.
- To be used in conjunction with Pages 1 and 2.

This plan illustrates a bicycle lane closure on Windsor St. to facilitate milling and paving operations.
- To be used in conjunction with Page 2.
- A lane width of 3 meters will be maintained at all times.



Google

- Legend**
- Barrel
 - Cone
 - Work Area
 - Sign Base
 - Open To Pedestrians
 - Closed to Pedestrians



Date: 10/13/2021 Author: John Smith (johns@easternttraffic.ca) Project: 1325 Lower Water St
 Page 1: Partial Lane Closure Job #: 2103305 Super: Matt Nickerson

Comments:

- This plan illustrates a Partial Lane Closure on Lower Water St. to facilitate a cast in place catch basin install between NSPI and Bishop Landing.
- Using Application Guide C-22 from the NSTCM (2018.01.25)



Legend		W	SO
●	Barrel	A	50
▲	Cone	L	30
■	Work Area	B	5
■	Sign Base	D	5
■	Temporary Condition Sign		
■	Jersey Barrier		

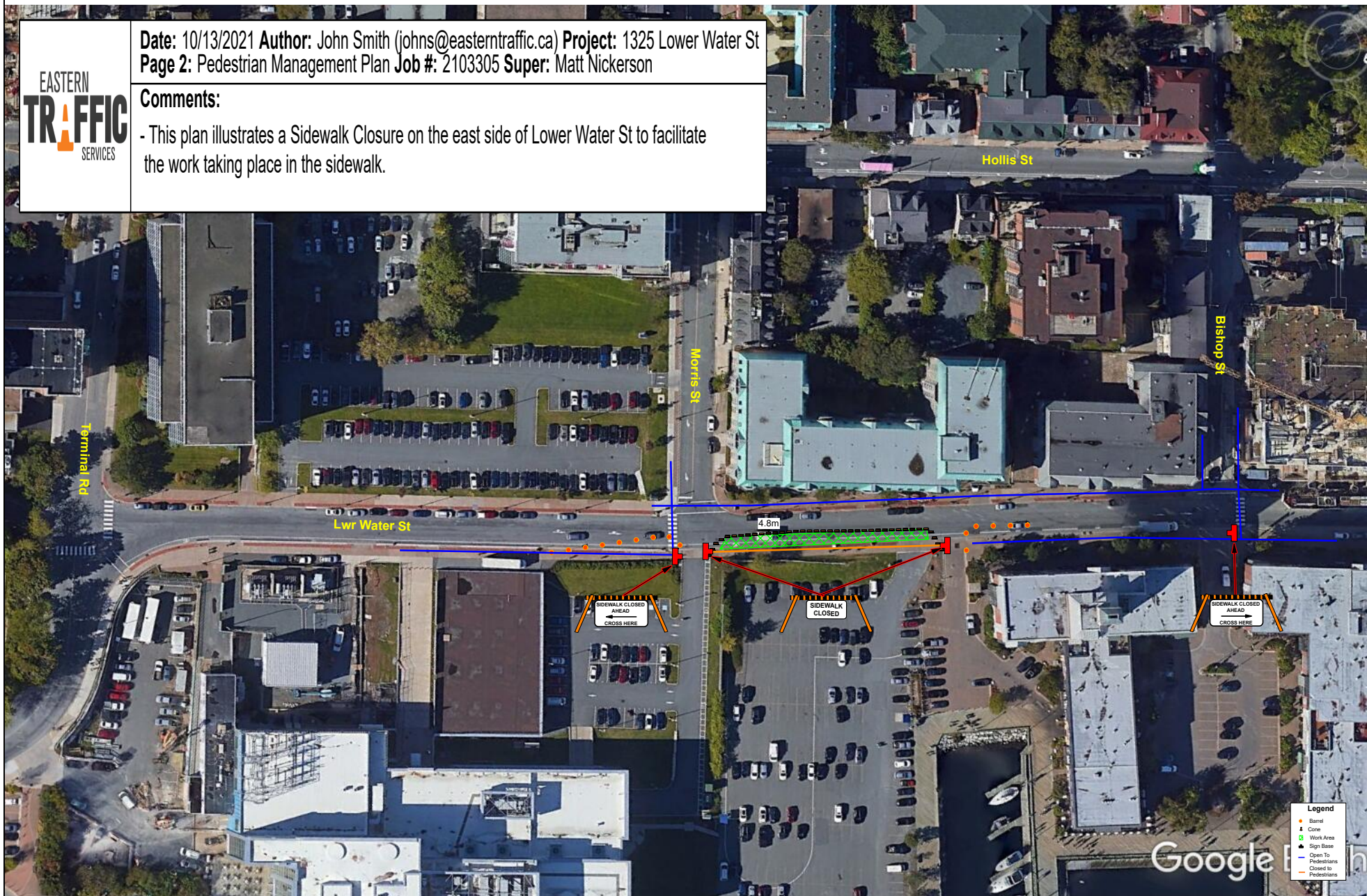
W	Speed Zone	km/h
A	Sign Spacing	m
L	Sign Length	m
B	Buffer Area Length	m
D	Cone From Spacing	m



Date: 10/13/2021 **Author:** John Smith (johns@easterntraffic.ca) **Project:** 1325 Lower Water St
Page 2: Pedestrian Management Plan **Job #:** 2103305 **Super:** Matt Nickerson

Comments:

- This plan illustrates a Sidewalk Closure on the east side of Lower Water St to facilitate the work taking place in the sidewalk.





Date: 10/13/2021 **Author:** John Smith (johns@easterntraffic.ca) **Project:** 1325 Lower Water St
Page 3: Tactical Bikeway Closure **Job #:** 2103305 **Super:** Matt Nickerson

Comments:

- This plan illustrates a bicycle lane closure on Lower Water St. to facilitate cast in place catch basin.
- To be used in conjunction with Pages 1 and 2.

This plan illustrates a bicycle lane closure on Windsor St. to facilitate milling and paving operations.
- To be used in conjunction with Page 2.
- A lane width of 3 meters will be maintained at all times.



Google

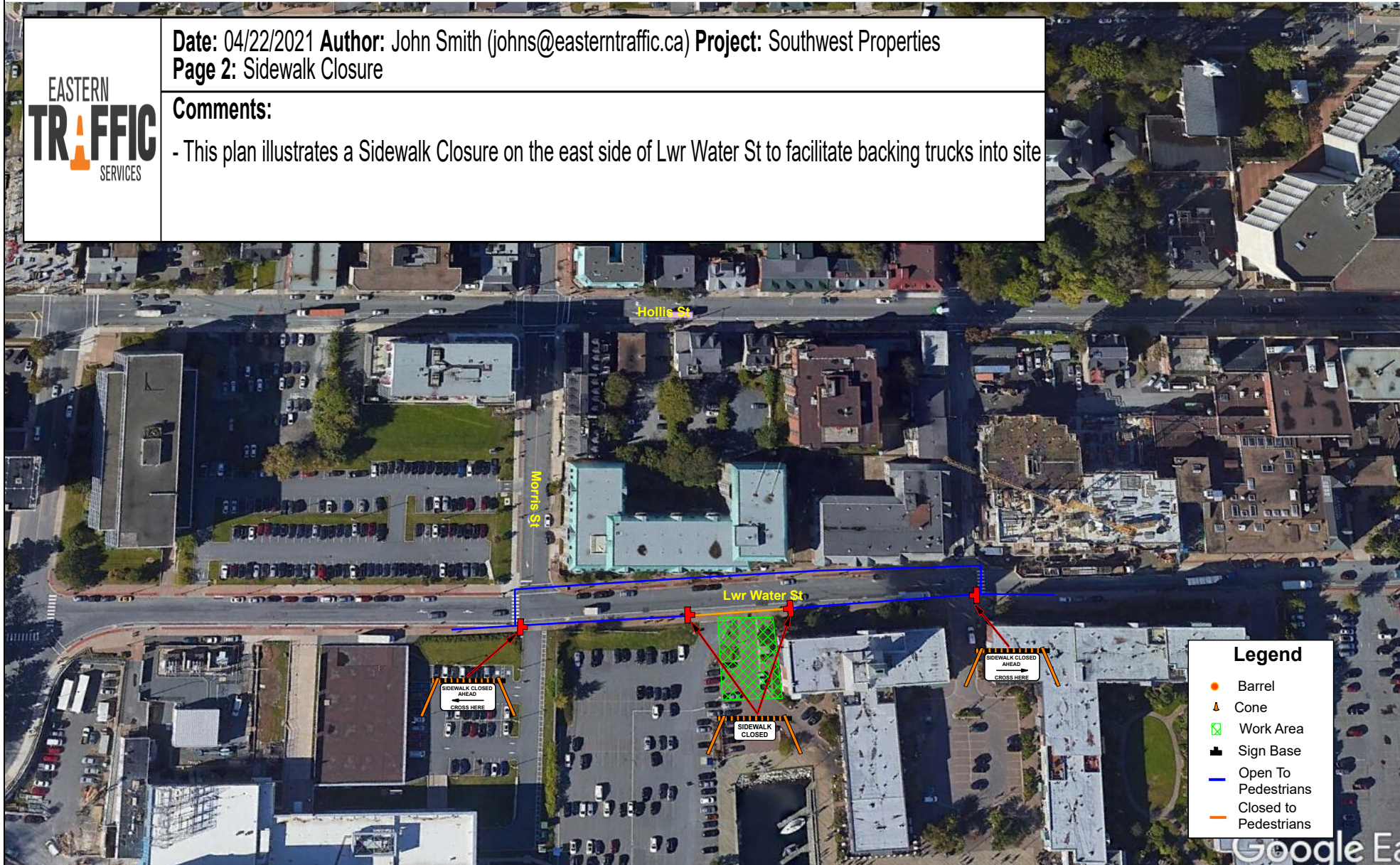
- Legend**
- Barrel
 - Cone
 - Work Area
 - Sign Base
 - Open To Pedestrians
 - Closed to Pedestrians



Date: 04/22/2021 Author: John Smith (johns@easterntraffic.ca) Project: Southwest Properties
Page 2: Sidewalk Closure

Comments:

- This plan illustrates a Sidewalk Closure on the east side of Lwr Water St to facilitate backing trucks into site



Legend

- Barrel
- ▲ Cone
- ▨ Work Area
- Sign Base
- Open To Pedestrians
- Closed to Pedestrians