

## CUNARD DEVELOPMENT

*Notice – Thursday, July 14<sup>th</sup>*

Southwest Properties is the developer for the mixed-use residential project being constructed at 1325 Lower Water Street on the Cunard lot.

Site activity on **Wednesday, July 20<sup>th</sup>** will require a sidewalk closure on the east side of Lower Water Street.\* This is required to safely accommodate construction activity.

During this time pedestrian traffic will be diverted to the opposite side of the street in front of Waterfront Place condominium and bicycles will merge into traffic flow. Traffic control personnel will be onsite.

The Southwest staff parking lot on the north side of the Cunard site will have limited access and all delivery trucks, vehicles and pedestrians will be redirected to Bishop's Landing courtyard.

There are no planned disruptions to local services or vehicular traffic during this scheduled, Halifax City approved work.

All site work is in adherence to HRM's working hours and noise by-laws.

We appreciate your patience and co-operation as we undergo construction, and we look forward to introducing an exciting new residential and retail address to Halifax.

Forward any questions pertaining to site activity to Southwest Properties at [urbanhalifax@southwest.ca](mailto:urbanhalifax@southwest.ca)

All community updates can be found on our company website and notices on social channels > <https://southwest.ca/developments/cunard/>

*\*Side walk closure will extend from in front of Cunard lot to 1475 Lower Water Street.*



**Date:** 10/13/2021 **Author:** John Smith (johns@easterntraffic.ca) **Project:** 1325 Lower Water St  
**Page 3:** Tactical Bikeway Closure **Job #:** 2103305 **Super:** Matt Nickerson

**Comments:**

- This plan illustrates a bicycle lane closure on Lower Water St. to facilitate cast in place catch basin.
- To be used in conjunction with Pages 1 and 2.

This plan illustrates a bicycle lane closure on Windsor St. to facilitate milling and paving operations.  
- To be used in conjunction with Page 2.  
- A lane width of 3 meters will be maintained at all times.



Google

- Legend**
- Barrel
  - Cone
  - Work Area
  - Sign Base
  - Open To Pedestrians
  - Closed to Pedestrians





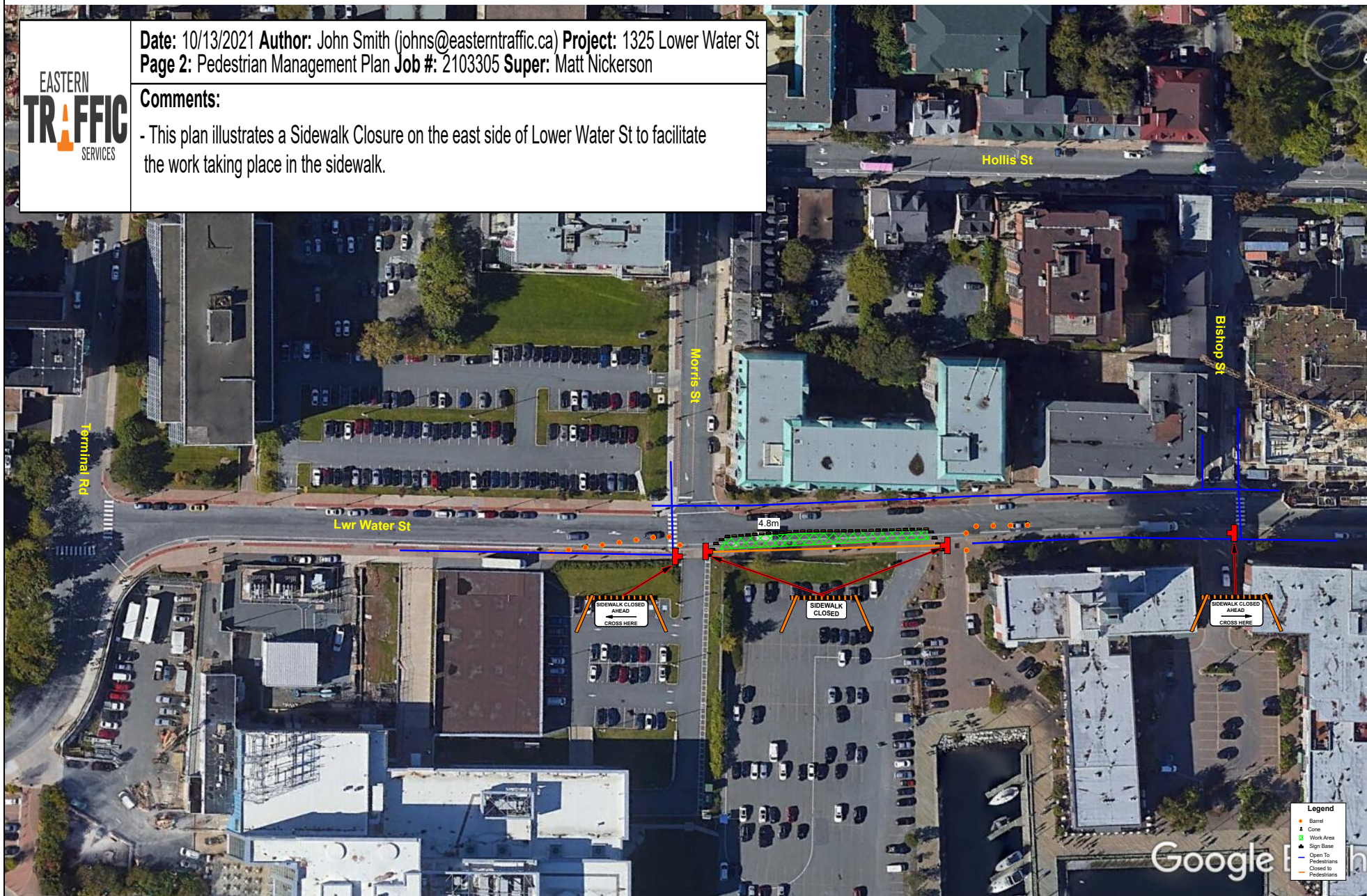




**Date:** 10/13/2021 **Author:** John Smith (johns@easterntraffic.ca) **Project:** 1325 Lower Water St  
**Page 2:** Pedestrian Management Plan **Job #:** 2103305 **Super:** Matt Nickerson

**Comments:**

- This plan illustrates a Sidewalk Closure on the east side of Lower Water St to facilitate the work taking place in the sidewalk.







**Date:** 10/13/2021 **Author:** John Smith (johns@easterntraffic.ca) **Project:** 1325 Lower Water St  
**Page 3:** Tactical Bikeway Closure **Job #:** 2103305 **Super:** Matt Nickerson

**Comments:**

- This plan illustrates a bicycle lane closure on Lower Water St. to facilitate cast in place catch basin.
- To be used in conjunction with Pages 1 and 2.

This plan illustrates a bicycle lane closure on Windsor St. to facilitate milling and paving operations.  
- To be used in conjunction with Page 2.  
- A lane width of 3 meters will be maintained at all times.



Google

- Legend**
- Barrel
  - Cone
  - Work Area
  - Sign Base
  - Open To Pedestrians
  - Closed to Pedestrians

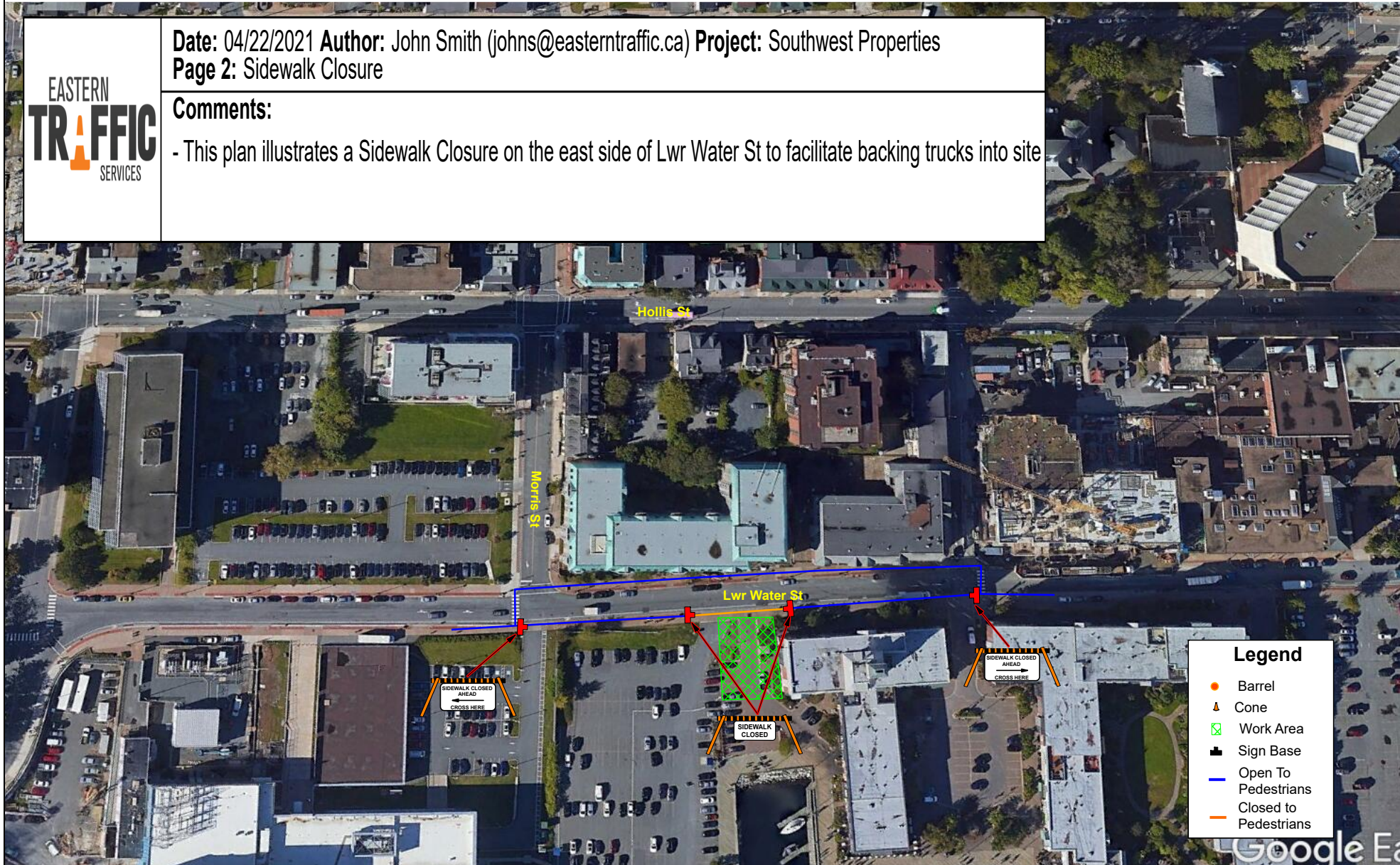




Date: 04/22/2021 Author: John Smith (johns@easterntraffic.ca) Project: Southwest Properties  
Page 2: Sidewalk Closure

Comments:

- This plan illustrates a Sidewalk Closure on the east side of Lwr Water St to facilitate backing trucks into site



**Legend**

- Barrel
- ▲ Cone
- ▨ Work Area
- Sign Base
- Open To Pedestrians
- Closed to Pedestrians